

# Simultaneous UV Spectrophotometric Method for Estimation of Sitagliptin phosphate and Metformin hydrochloride in Bulk and Tablet Dosage Form

Sahil Latif Mansuri<sup>1</sup>, Ankita D. Sonar<sup>2</sup>

<sup>1,2</sup> Swami Vivekanandasanstha's Institute of Pharmacy, Department of Pharmaceutics, Malegaon  
Corresponding Author: Ankita D. Sonar

## ABSTRACT

Two simple, precise and economical UV methods have been developed for the simultaneous estimation of Sitagliptin phosphate and Metformin hydrochloride in bulk and pharmaceutical dosage form. Method A is Absorbance maxima method, which is based on measurement of absorption at maximum wavelength of 266nm and 232nm for Sitagliptin phosphate and Metformin hydrochloride respectively. Method B is area under curve (AUC), in the wavelength range of 244-279 nm for Sitagliptin phosphate and 222-240nm for Metformin hydrochloride. Linearity for detector response was observed in the concentration range of 25-225 µg/ml for Sitagliptin phosphate and 2-12 µg/ml for Metformin hydrochloride. The accuracy of the methods was assessed by recovery studies and was found to be 99.64% and 98.98% for Sitagliptin phosphate and Metformin hydrochloride. The developed method was validated with respect to linearity, accuracy (recovery), precision and specificity. The results were validated statistically as per ICH Q2 R1 guideline and were found to be satisfactory. The proposed methods were successfully applied for the determination of Sitagliptin phosphate and Metformin hydrochloride in commercial pharmaceutical dosage form.

**Keywords:** Sitagliptin phosphate, Metformin hydrochloride, Simultaneous estimation, Absorbance maxima method, Area under curve.

## INTRODUCTION

Sitagliptin Phosphate (STG) is 1,2,4-triazolo[4,3-a] pyrazine, 7-[(3R)-3-amino-1-oxo-4-(2,4,5-trifluorophenyl) butyl]-5,6,7,8-tetrahydro-3-(trifluoromethyl), phosphate (Fig.1). It is used in the treatment of diabetes. It is an oral antihyperglycemic (anti-diabetic) drug of the dipeptidylpeptidase-4 (DPP-4) inhibitor class. Sitagliptin competitively inhibits dipeptidylpeptidase-4, an enzyme involved in the breakdown of incretin such as glucagon-like peptide-1 (GLP-1) which potentiates insulin secretion in vivo. Inhibition of DPP-4 reduces the breakdown of GLP-1 and increases insulin secretion; this suppresses the release of glucagon from the pancreas and drives down blood sugar levels. This drug is not official in any pharmacopoeia.

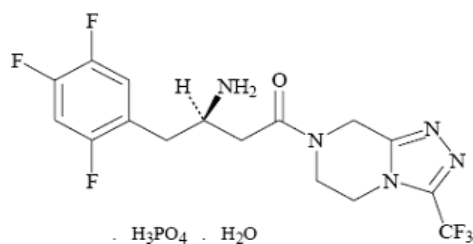


Fig.1 Sitagliptinphosphate

Metformin HCl (MET) is 3-(diaminomethylidene)-1, 1-dimethylguanidine (Fig. 2). It is an oral anti-diabetic drug which is the first line drug of choice for the treatment of type 2 diabetes, particularly in overweight or obese people and those with normal kidney function. Metformin improves hyperglycemia, primarily through its suppressive action on production of hepatic glucose (hepatic gluconeogenesis).

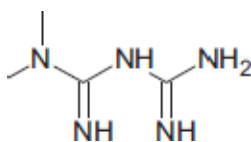


Fig.2 Metforminhydrochloride

Several methods were reported for the simultaneous estimation of Metformin HCl alone and in combination with other drugs viz UV-spectrophotometry [1,2,3,4,9,10,13], estimation in plasma and urine using HPLC [7,14], assay using RP-HPLC [12].

A comprehensive literature research reveals the lack of a spectrophotometric analytical method for simultaneous estimation of Sitagliptin and Metformin HCl in pharmaceutical formulations.

A successful attempt was made to develop accurate, precise and simple method of analysis for estimation of both the drugs in combined dosage form.

## MATERIALS AND METHODS

### Materials:

Sitagliptin phosphate and Metformin hydrochloride were generous gift samples from Matrix Laboratory Limited (Hyderabad, India). Commercial Janumet tablets containing 50mg of Sitagliptin phosphate and 500mg of Metformin hydrochloride were purchased from local market and used within their shelf-life period. All other chemicals used were of analytical grade.

### Instrumentation:

A Jasco double beam UV-visible spectrophotometer, Model: V-630, with affixed band width (2nm) and 1-cm quartz cell was used for spectral and absorbance measurements. In addition, electronic balance, micropipette and sonicator were used in this study.

### Procedure:

Preparation of standard stock solution-

Standard stock solutions of each STG and MET was prepared by dissolving 100 mg of standard MET and 10 mg of standard STG separately in 10ml distilled water with vigorous shaking. A liquot in the range of 25-225 $\mu$ g/ml for STG and 2-12 $\mu$ g/ml for MET was prepared using this stock solution.

**Method A: Absorption Maxima Method**

For the selection of analytical wavelength, standard solution of STG and MET were scanned in the spectrum mode from 400 nm to 200nm separately. From the spectra of drug  $\lambda_{max}$  of STG, 266nm [Fig.3], and  $\lambda_{max}$  of MET, 232nm [Fig.4], were selected for the analysis. A liquot s of standard stock solution were made and calibration curve was plotted [Fig.5 and Fig.6].

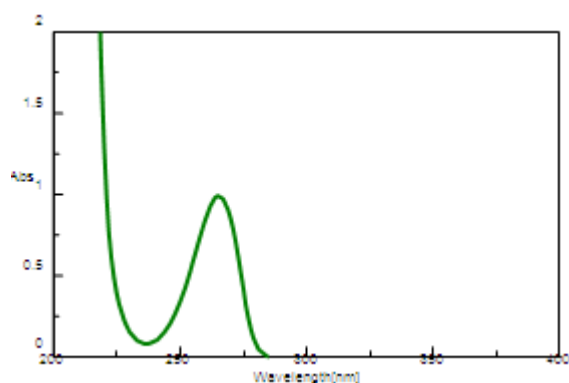


Fig.3 It shows  $\lambda_{max}$  of STG

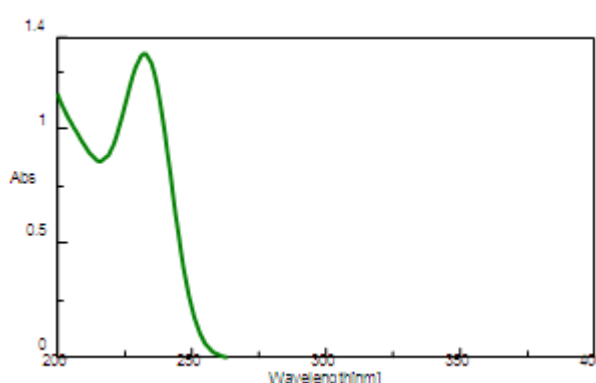


Fig.4 It shows  $\lambda_{max}$  of MET

**Simultaneous estimation of Sitagliptin phosphate and Metforminhydrochloride:**

The wavelength maxima of Metformin HCl and Sitagliptin were determined and found to be 232 nm ( $\lambda_1$ ) and 266nm ( $\lambda_2$ ) respectively where there was no interference among the drugs. The over lain spectrum is shown in Fig.4.

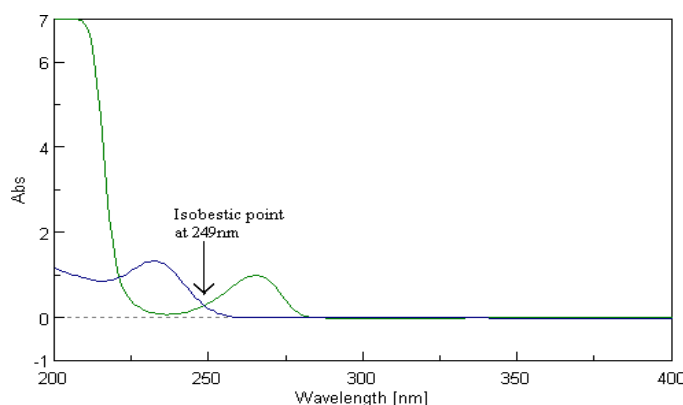


Fig.4 Isobestic point of STG and MET

**Method B: Area under Curve Method**

From the spectra of drug obtained after scanning of standard solution of STG and MET separately, area under the curve in the range of 244-279nm and 222-240nm was selected for the analysis. The calibration curve was prepared in the concentration range of 25-225 $\mu$ g/ml for STG and 2-12 $\mu$ g/ml for MET at their respective AUC range.

Both drugs followed the Beer-Lambert’s law in the above mentioned concentration range. The

calibration curves were plotted as absorbance against concentration of STG and MET. The coefficient of correlation ( $r$ ), slope and intercept values of this method are given in Table 1.

### Application of the proposed methods for the determination of STG and MET in tablet dosage form:

For the estimation of drugs in the tablet formulation, 20 tablets were weighed and weight equivalent to 50mg of STG and 500mg of MET was transferred to 50ml volumetric flask and ultrasonicated for 20 minutes and volume was made up to the mark with distilled water. The solution was then filtered through a Whatmann filter paper (No.42). The filtrate was appropriately diluted further. In Method-A, the concentration of STG and MET was determined by measuring the absorbance of the sample at 266nm and 232nm respectively in zero order spectrum mode. By using the calibration curve, the concentration of the sample solution was determined.

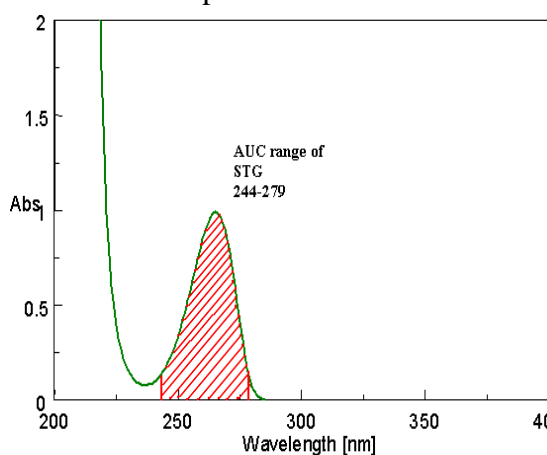


Fig.5 It shows AUC of STG

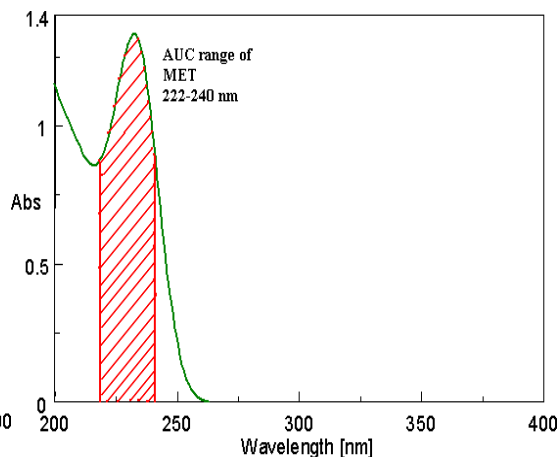


Fig.6 It shows AUC of MET

In Method-B, the concentration of STG and MET was determined by measuring area under curve in the range of 244-279nm and 222-240nm. By using the calibration curve, the concentration of the sample solution was determined.

### Validation of the developed methods<sup>18</sup>:

The methods were validated with respect to accuracy, linearity, precision and selectivity.

**Accuracy:** Accuracy of an analysis was determined by systemic error involved. Accuracy may often be expressed as

% Recovery by the assay of known, added amount of analyte. It is measure of the exactness of the analytical method. Recovery studies carried out for both the methods by spiking standard drug in the powdered formulations 80% ,100%, 120% amount of each dosage content as per ICH guidelines.

**Linearity:** The linearity of measurement was evaluated by analyzing different concentration of the standard solution of STG and MET. Result should be expressed in terms of correlation co-efficient.

**Precision:** The reproducibility of the proposed method was determined by performing tablet assay at different time intervals (morning, afternoon and evening) on same day (Intra-day assay precision) and

on three different days(Inter-dayprecision). Result of intra-day and inter-day precision is expressed in% RSD.

**Table1: Table shows Optical characteristics and precision**

Sr.No.	Parameter	STG	MET
1.	λ-max	266	232
2	Beer's law limit(µg/ml)	25-225	2-12
3.	Molar absorptivity(L/mol.cm)	2357.975	16398.32
4.	Sandell's sensitivity(µg/Sq.cm/0.001)	0.2219	0.010
5.	Correlation coefficient(r)	0.999	0.999
6.	Slope(m)	0.004206	0.0990
7.	Intercept	0.03865	0.0760

**Table2:Table shows Results of Analysis of Tablet Formulation (N\*=6)**

Method	Drug	Label	Claimmg	Amount of drug estimated (mg/tab)	%Label Claim*±S.D.	%Recovery
A B	STG	50		99.58	99.58±0.6172	99.58
				99.30	99.30±0.0852	99.30
A B	MET	500		99.98	99.98±0.2727	99.98
				99.65	99.65±0.0357	99.65

**Table3: Table shows Result of Recovery studies**

Excess drug added to the analyte(%)	Drug	%Recovery		%RSD		SE	
		MethodA	MethodB	MethodA	MethodB	MethodA	MethodB
80	STG	99.64	100.01	0.409	0.289	0.673	0.154
		100	100.06	0.367	0.194	0.417	0.128
		120	100.78	0.093	0.227	0.767	0.329
80	MET	98.98	98.98	0.297	0.288	0.813	0.822
		100	100.01	0.437	0.128	0.673	0.987
		120	100.38	0.116	0.116	0.994	0.986
		100.38		0.124			

a)RSD:Relative Standard deviationb)SE:Standard error

**Table4: Table shows Result of Intra-day and Inter-day precision**

Method	Drug	Intra-dayprecision			Inter-day precisionSD	%RSD	SE
		SD	%RSD	SE			
A B	STG	0.617	0.418	0.205	0.587	0.378	0.157
		0.543	0.358	0.125	0.356	0.237	0.115
A B	MET	0.272	0.837	0.113	0.198	0.759	0.108
		0.183	0.765	0.104	0.167	0.658	0.098

## RESULTS AND DISCUSSION

The methods discussed in the present work provide a convenient and accurate way for analysis of Sitagliptin phosphate and Metformin hydrochloride in its bulk and pharmaceutical dosage form. Absorbance maxima of STG at 266nm and MET at 232nm were selected for the analysis. Linearity for detector response was observed in the concentration range of 25-225µg/ml for STG and 2-12µg/ml for MET. Percent label claim for STG and MET in tablet analysis was found in the range of 99.58% and 99.98% [Table 2]. Standard deviation and coefficient of variance for six determinations of tablet

formulation, was found to be less than  $\pm 2.0$  indicating the precision of the methods. Accuracy of proposed methods was ascertained by recovery studies and the results are expressed as % recovery. % recovery for STG and MET was found in the range of 99.64% and 98.98% values of standard deviation and coefficient of variation was satisfactorily low indicating the accuracy of all the methods. %RSD for Intra day assay precision for STG was found to be 0.617 and 0.543 for Method A and B, and for MET, 0.272 and 0.183 for Method A and B. Inter day assay precision for STG was found to be 0.587 and 0.356 for Method A and B and for MET 0.198 and 0.167 for Method A and B. Based on the results obtained, it is found that the proposed methods are accurate, precise, reproducible & economical and can be employed for routine quality control of Sitagliptin phosphate and Metformin hydrochloride in bulk drug and its pharmaceutical dosage form.

## CONCLUSION

UV spectrophotometric methods for Sitagliptin phosphate and Metformin hydrochloride were developed separately in bulk and tablet dosage form by Absorbance maxima method and Area under curve method. Further, UV spectrophotometric methods for the simultaneous estimation of Sitagliptin phosphate and Metformin hydrochloride were in bulk and combined dosage form. The methods were validated as per ICH guidelines. The standard deviation and % RSD calculated for these methods are  $<2$ , indicating high degree of precision of the methods. The results of the recovery studies showed the high degree of accuracy of these methods. In conclusion, the developed methods are accurate, precise and selective and can be employed successfully for the estimation of STG and MET in bulk and pharmaceutical dosage form.

## Acknowledgements

Authors are grateful to Prof. M.N. Navale, President Sinhgad Technical Education Society for his continuous support and Matrix Laboratory Limited (Hyderabad, India) for drug gift sample.

## REFERENCES

1. P. C. Bhamare et al., A New Analytical Method Development and Validation of Metformin Hydrochloride and Fenofibrate by Absorbance Ratio UV Spectrophotometric Method, Asian Journal of Biochemical and Pharmaceutica Research, Issue 2 (Vol.1) **2011**, 115-128.
2. Rashmi Ranjan Sarangi et al., Simultaneous UV-Spectrophotometric Estimation of Glipizide and Metformin in Bulk and Its Dosage Form, International Journal of Pharmaceutical & Biological Archives, **2011**, 1137-1145.
3. Ketan P. Dadhania et al., Development and Validation of Spectrophotometric Method for Simultaneous Estimation of Gliclazide and Metformin hydrochloride in Bulk and Tablet Dosage form by Simultaneous Equation Method, International Journal of Pharmaceutical Sciences and Research, Vol.2(6), **2011**, 1559-1563.
4. Pathade. P et al., Development and Validation of Stability Indicating UV Spectrophotometric Method for the Estimation of Sitagliptin Phosphate in Bulk and Tablet Dosage Form, Journal of Pharmacy Research 4(3), **2011**, 871-873.
5. Ramzia Iet al., Spectrofluorometric and Spectrophotometric Methods for the Determination of

- Sitagliptin in Binary Mixture with Metformin and Ternary Mixture with Metformin and Sitagliptin Alkaline Degradation Product, International journal of Biomedical science vol.7, **2011**, 62-69.
6. John G. Swales et al., Simultaneous quantitation of metformin and Sitagliptin from mouse and human dried blood spots using glaser diode thermal desorption and mass spectrometry, Journal of Pharmaceutical and Biomedical Analysis **55**, **2011**, 544-551.
  7. Xiang Fei Jiu et al., A high performance liquid chromatography method for the quantitative determination assay of Sitagliptin in rat plasma and its application in pharmacokinetics study, Journal of Chinese Pharmaceutical Sciences **20**, **2011**, 63-69.
  8. Ghazala Khan et al., Simultaneous Estimation of Metformin and Sitagliptin In Tablet Dosage Form, Asian Journal of Biochemical and Pharmaceutical Research, Issue 2, Vol. 1, **2011**, 352-58.
  9. P.N. Dhabale et al., Simultaneous UV Spectrophotometric Method for Estimation of Gliclazide and Metformin Hydrochloride in Tablet Dosage Form, International Journal of ChemTech Research, Vol. 2, No. 2, **2010**, 813-817.
  10. K. Sujana et al., Simultaneous Estimation of Pioglitazone Hydrochloride and Metformin Hydrochloride using UV Spectroscopic Method, JB iomed Sci and Res., Vol 2(2), **2010**, 110-115.
  11. Balasekaran C. et al., Development and Validation of Spectrophotometric Method for the Determination of DPP4 Inhibitor, Sitagliptin in its Pharmaceutical Dosage form, International Journal of Pharmacy and Pharmaceutical Sciences, Vol 2, Issue 4, **2010**, 138-142.
  12. K.S. Lakshmi et al., Simultaneous Determination of Metformin and Pioglitazone by Reversed phase HPLC in Pharmaceutical Dosage form, International Journal of Pharmacy and Pharmaceutical Sciences, Vol. 1, Issue 2, **2009**, 162-66.
  13. Patil Sudarshan S et al., Development and Validation of analytical method for Simultaneous Estimation of Glibenclamide and Metformin HCl in Bulk and Tablets using UV – visible spectroscopy, International Journal of ChemTech Research, Vol. 1, No. 4, **2009**, 905-909.
  14. Valentina Porta et al., HPLC-UV determination of metformin in human plasma for application in pharmacokinetics and bioequivalence studies, Journal of Pharmaceutical and Biomedical Analysis **46**, **2008**, 143-147.
  15. Wei Zeng et al., Determination of Sitagliptin in human urine and hemodialysate using turbulent flow on line extraction and tandem mass spectrometry, Journal of Pharmaceutical and Biomedical Analysis **46**, **2008**, 534-542.
  16. Beckett, A.H. and Stenlake, J.B. Practical Pharmaceutical Chemistry. 4th Ed Part 2. New Delhi: CBS Publishers and Distributors; **2002**, 275-78.
  17. Skoog, D.A., West, D.M., Holler, F.J. and Crouch, S.R., In; Fundamentals of Analytical Chemistry, 5th Edn., Thomson Brooks / Cole, 971-995.