

A General Study of the Historical, Economic and Social Aspects of Hostel Students in Pune City

Dr. Tejaswinii S. Dolas¹, Dr. Sanjay D. Chakane²

INTRODUCTION

A general study of hostel's students in Pune city was proofed to reveals a rich history time to time tied to social reform like ABM Sanskrit Parishad providing accommodation for backward classes and modern challenges for time to time, with economic aspects highlighting government schemes for SC/ST/OBC hostels and the rise of private options, while socially, hostels foster diverse interactions but also pose issues like poor nutrition and psychological distress, necessitating institutional support for well-being Today, we saw many types of hostel in the Pune city.

- University types of hostel like SPPU 12th hostel for girls and boys.
- Government hostel /Samajkalyan hostel
- Aided hostel
- Private Hostel

Each one has his own history. This paper focuses of historical and economical aspect of hostel students.

HISTORICAL ASPECTS:

- **Early Educational Reform:** Institutions like Akhil Bharatiya Maratha Shikshan Parishad in Pune, founded by reformers, provided hostels to spread education, especially for backward classes, in the early 20th century in India.
- **Colonial Era Roots:** Some historical hostel or older hostel structures might have origins in British colonial times, as seen in older campus buildings near Savitribai Phule Vidyapeeth (SPPU).
- **Growth & Vision:** Social institution or revolutionary of Pune shows many hostels for eg. Mahila Ashram, Sevasadan etc. Also Colleges like ILS Law College. Established in the 1930s, built hostels to support growing student populations, reflecting foresight in educational planning.

ECONOMIC ASPECTS:

- **Government Support:** In Pune hostels, government hostels offering free lodging/boarding for meritorious SC, ST, and OBC students, with online admissions starting in 2014.
- **Funding & Management:** Studies on government or institutions hostels point to issues like irregular grants and staff shortages, affecting service delivery.
- **Market Trends:** The student housing market sees a mix of government facilities and private players, with demand driven by Pune's status as an educational hub.

SOCIAL ASPECTS

Diversity & Integration: Any types of hostels serve as melting pots, improving social interaction and friendship, but also presenting challenges in diversity management within institutions.

Health & Well-being: Research indicates potential negative impacts, including poor eating habits like skipping meals, fast food and increased psychological distress, compared to day scholars.

Support Systems: Institutions implement mentorship programs to help first-year students adjust socially and emotionally, fostering a sense of belonging.

Challenges: Hostel faced issue like inadequate food, staff interference, and maintaining discipline (e.g., anti-ragging rules) are common social concerns.

KEY TAKEAWAYS

Pune's hostel scene reflects broader Indian educational trends, balancing historical mandates for inclusive education with modern demands for quality living, facing socio-economic pressures while aiming to provide holistic student development.

History of hostel is proofed important role in shaping a student's personality. Development and social behavior of hostel students becoming stronger and stronger. Living away from home with peers from different backgrounds helps students develop social skills, independence, and adaptability. This study focuses on the social aspects of students living in hostels.

Social Aspects of Hostel Life included Social Interaction is hostel students interact daily with roommates and other students, which improve communication skills and confidence. Cultural Exchange of students from different regions, languages, and cultures live together, promoting tolerance and mutual respect.

3. Friendship and Peer Support-*Hostel life encourages strong friendships and emotional support, especially during exams and stressful times.*

4. Discipline and Adjustment-*Students learn discipline, time management, and how to adjust to shared living conditions.*

5. Leadership and Teamwork-*Participation in hostel activities helps develop leadership qualities and teamwork skills.*

6. Challenges- *Home sickness, Conflicts with roommates, Lack of privacy, Peer pressure*

OBJECTIVES OF THE STUDY

1. To understand social interactions among hostel students
2. To identify positive and negative social experiences
3. To understand how hostel life builds cooperation and leadership
4. To evaluate of hostel students as a development and economical progress.
5. To find out whether hostel is support to hostel students or not.

Importance of Historical and Economical study of hostels:

- This is a very new but familiar subject to us.
- Indian Revolutionary was known that hostel is a support to getting education, and education is a key of development of individual, family, state, country or we can say humanities.

Hypothesis:

1. Hostels have their own precious history through the Indian revolutionary of the Indian society.
2. Hostel is a key as solution of economical, un-development, backward social aspect, getting education to the society.

METHODOLOGY

- **Sample Size:** 108 hostel students
- **Method:** Questionnaire and informal interviews
- **Tools Used:** direct interview with the help of questionnaire ,Observation, group discussion
- **Area of Study:** Junior and senior college going hostel students.

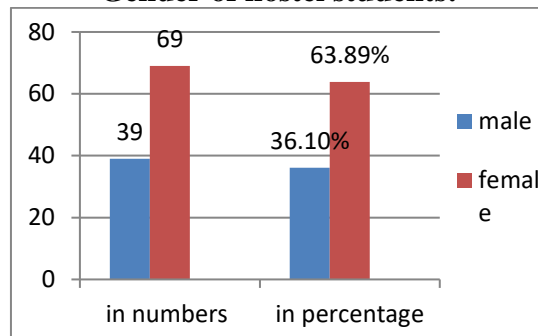
DATA INTERPRETATION:

Selected total samples 108 hostel students are included with girls and boys of various types of hostel. Selected questions are shows or here like social aspect are gender involvements of hostel girls and boys and Age of hostel students shows special – economic development.

SPPU’s hostel or Stri shikshan Sananth, Hingne now known as karve nager’s hostel is Sir Sasoon Devid hostel, or Sevasaden , recently Samaj kalyan hostel and private hostel etc shows history is very rich. This all hostels founder ,member was revolutionary.

Sr. No	Male	Female	Other	Total
1	39	69	0	108
2	36.1%	63.89%	0	100%

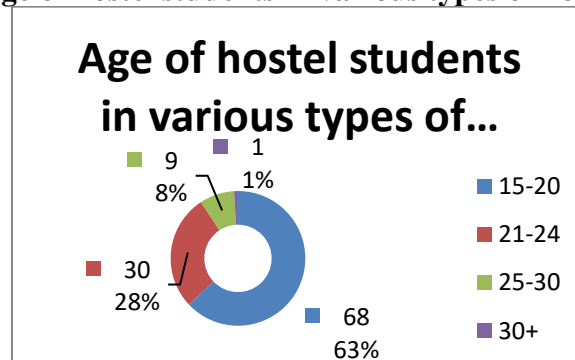
Table No. 1.1
Gender of hostel students:



This Table shows gender of hostel students. Out of total 39 hostel boys and 69 hostel girls. They form percentages respectively 36%, 64% and 0% other

Sr. No	15-20	21-24	25-30	30+	Total
In numbers	68	30	9	1	108
In percentage	62.96	27.77	8.33	0.92	100%

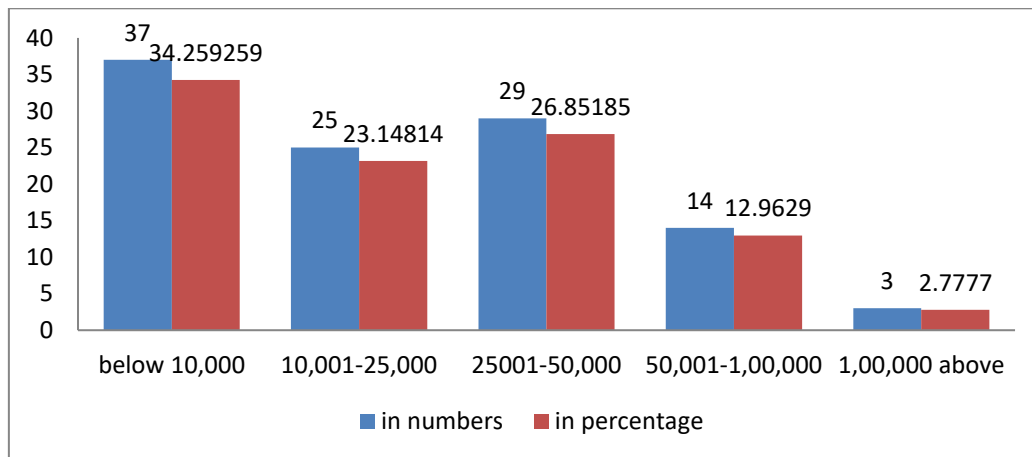
Table 1.2
Age of hostel students in various types of hostel



This Table shows age of hostel students in various types of hostel. Out of total 68 hostel students from 15-20 age groups. 30 hostel students from 21-24 age group, 9 hostel students from 25-30 age group and 1 hostel students from age group 30 above. They form percentages respectively 62.96%, 27.77%, 8.33% and 0.92% other

Table No.1.3
Hostel students family’s monthly income

Sr. No.	Below 10000	10001-25000	25001-50000	50001-100000	100000 above	Total
In Numbers	37	25	29	14	3	108
In Percentage	34.259259	23.14814	26.85185	12.9629	2.7777	100%



This Table is shows income of hostel students in various types of hostel. Out of total 37 hostel students from below 10000 monthly incomes. 25 hostel students from 10001-25000 monthly incomes, 29 hostel students from 25001-50000 monthly incomes, 14 hostel students from 50001-100000 monthly incomes and 3 hostel students from 100000 above monthly income. They form parentages respectively 34.25%, 23.14%, 26.85% , 12.96 % and 2.11% .

Above table number 1.1 shows hostel girls and boys opportunity for getting education in the Pune city. This ratio is bigger day by day. Students come from distance area. Now society is change from past history of 18th century to till now. Girls/women’s know importance of education and independence of individual, family and society.

Table number 1.2 shows age of hostel students increase from junior college to higher education and technical education.

Table number 1.3 shows monthly incomes of hostel students. Most of students from poor family income or under poverty line. Sometime they knew as orphan students in the society.

FINDINGS

- Most students reported improved social confidence through in hostel life.
- Hostel life helped students become more independent
- Some students faced adjustment problems initially in the hostel. They saw to each other and help to each other.
- Group living improved cooperation and responsibility increase day by day . its help to build society.

CONCLUSION

The study shows that hostel life has a strong influence on the social and economical development of students. While there are challenges, the overall impact is positive, helping students grow socially, economically, emotionally, and personally.

BIBLIOGRAPHY:

1. National conference –ISBN :978-93-84916-91-6 National Conference on “Modern Trends in Accounting, Banking and Management”
2. National conference – ISBN :978-93-5097-679-1 CHINT@N National Conference on Rural Development: A Powerful Engine for a Developed India
3. Population through 2011
4. http://www.censusindia.gov.in/2011census/dchb/DCHB_A/27/2725_PART_A_DCHB_PUNE.pdf,pp-63.
5. My own Ph.D Thesis