

Impact of Social Inequality and Culture on Elementary Education in Bihar

Dr. Nafisha Naaz

Assistant Professor, Department of Sociology, B.N. Mandal University, Madhepura

Abstract

Education, in its widest sense, plays a vital role in the overall development of children by equipping them with essential knowledge and skills and enabling their access to productive employment in later life. Elementary education serves as the foundation for higher education and is crucial for the social and economic development of society.

In Bihar, both rural and urban areas face significant educational challenges due to prevailing socio-economic conditions. Social inequalities based on caste, class, and gender continue to be major factors contributing to educational deprivation among children. A substantial number of children belonging to economically weaker and socially marginalized sections, particularly girls in rural areas, either lack access to elementary education or are unable to complete even the minimum years of schooling.

Keywords: Elementary Education, Society, Socio-Economic Conditions, Social Inequalities, Caste, Class, Gender

Introduction

Indian society is a highly stratified and diverse society, divided on the basis of caste, class, religion, gender, and regional differences. These sociological factors significantly influence the aims, curriculum, organization, and overall quality of education (Ruhela & Nayak, 2014).

Education acts as a means of transmitting cultural patterns and values. It is both influenced by culture and, in turn, influences social structures by bringing about change or continuity in society. In this way, education plays a dual role: it is shaped by society while also shaping it by strengthening, modifying, or transforming existing social structures.

The entire system of social life is referred to as culture, and education is closely related to it. Culture includes learned behaviors, values, attitudes, knowledge, and material aspects that are transmitted from one generation to another. A child is born into a family and grows up within a specific cultural environment. The traditions, customs, and practices of the family and society deeply influence the child's learning process.

Therefore, to understand education, it is essential to understand the cultural context in which a child is raised. Education is the process through which cultural patterns are transmitted, both formally and informally (Mathur, 2013). It derives its content from culture and also receives direction from it.

In less developed societies, education is often informal and transmitted through family and community practices. In contrast, in technologically advanced societies, education becomes more formal, structured, and institutionalized. Thus, the socio-cultural environment determines both the nature and structure of education.

Moreover, sociological factors such as caste, class, religion, gender, and region play a crucial role in shaping different aspects of education. These include:

- Determination of educational aims
- Curriculum design
- Organization of education
- Institutional culture
- Quality and expansion of education

At the same time, education also influences these social structures by either reinforcing, modifying, or transforming them.

In conclusion, education and culture are deeply interconnected. Education not only reflects cultural values but also acts as a powerful tool for social change. Hence, understanding the socio-cultural environment is essential for analyzing the nature, structure, and development of education in Indian society.

The caste system has historically created inequality in access to education. Lower castes were denied educational opportunities and faced social discrimination. Although the situation has improved, caste still influences educational participation.

Government schools today show increasing inclusivity, where children from different castes study together.

The caste system has historically played a significant role in shaping educational opportunities in India. Society was traditionally divided into hierarchical groups, with upper castes enjoying greater access to resources, including education, while lower castes faced discrimination and exclusion.

Marginalized groups, especially Scheduled Castes, were often denied access to schools and public facilities. They were subjected to social segregation and discrimination, which limited their educational opportunities. Although legal measures and social reforms have improved the situation, caste-based inequalities still persist in many parts of Bihar.

However, recent trends indicate a gradual decline in caste-based barriers in education. Government schools now provide opportunities for children from different caste backgrounds to study together, promoting inclusivity and social integration.

Class and Education

Social class plays a significant role in determining access to educational opportunities and the quality of education.

Upper Class

The upper class enjoys strong economic resources and easy access to high-quality education. They often send their children to private schools and well-equipped institutions with advanced facilities. Economic growth, urbanization, and industrial development have further strengthened this class. As a result, they consistently benefit from better educational opportunities and overall academic advantages.

Middle Class

The middle class places great importance on education as a means of upward social mobility. Despite financial constraints, they strive to provide better educational opportunities for their children. However, limited economic resources often restrict their access to high-quality institutions. Although they value education highly, many middle-class families struggle to afford expensive private schooling.

Lower Class

The lower class constitutes the majority of the population in Bihar. These families face multiple challenges such as poverty, illiteracy, and lack of resources. Due to financial limitations, children from this class are mostly enrolled in government schools. Poor living conditions and economic hardships often lead to lower educational attainment and higher dropout rates, limiting their future opportunities.

Religion and Education

India is a multi-religious society, and different religious communities have established educational institutions to preserve their cultural values and promote education. Institutions run by Hindu, Muslim, Christian, Sikh, Jain, and other communities contribute significantly to the educational system (Ruhela & Nayak, 2014). India is a multi-religious society where different religious communities play an important role in education. Various religious groups have established schools and colleges to preserve their culture and promote education.

Institutions run by Hindu, Muslim, Christian, Sikh, Jain, and other communities contribute significantly to the education system. These institutions often receive support from both the community and the government, reflecting the cultural diversity of India. India is a multi-religious society. Various religious communities have established educational institutions to preserve their cultural identity and promote education. These include institutions run by Hindu, Muslim, Christian, Sikh, Jain, and other groups.

Regional Differences and Education

There are significant regional disparities in India due to differences in economic development, infrastructure, and governance. Some states remain backward due to poverty, corruption, and lack of resources.

In Bihar, rural areas face problems such as poor infrastructure, lack of teachers, and inadequate educational facilities. These factors negatively affect the quality of education (Ruhela & Nayak, 2014).

There are significant regional disparities in India due to differences in:

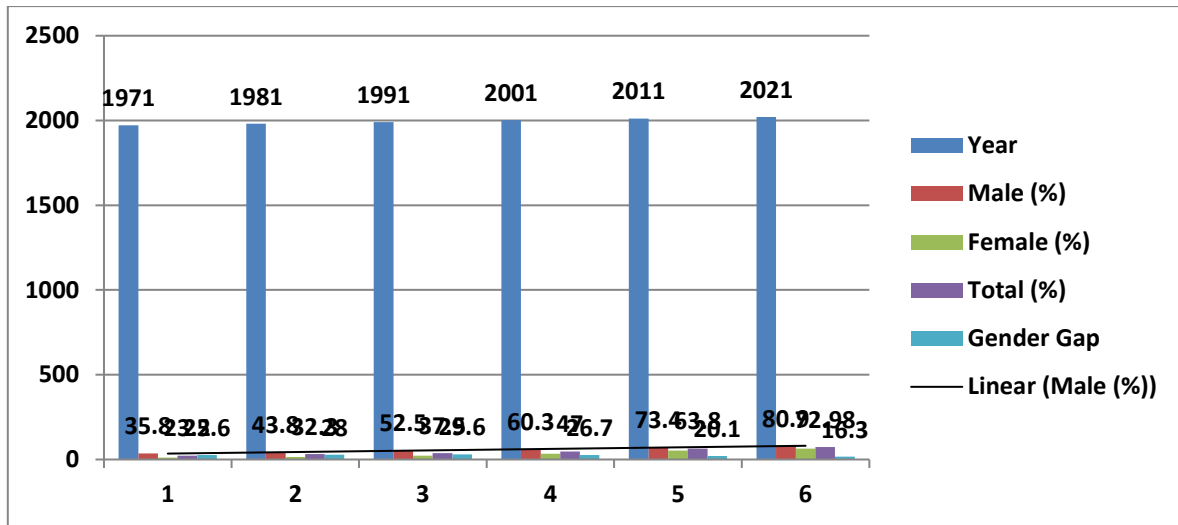
- Economic development
- Governance
- Infrastructure

Backward regions often suffer from poor educational quality, lack of resources, and administrative inefficiencies. Issues like corruption and lawlessness further affect educational standards

Gender and Education in Bihar

Gender inequality remains a major issue in Bihar. Although the Right to Education Act (2010) ensures free and compulsory education, disparities between boys and girls still exist.

Table 1: Trend of Literacy Rates in Bihar



I've created a bar chart showing literacy trends in Bihar (1971–2021)

According to Analysis

The literacy rate in Bihar has improved significantly, especially among females, but the gender gap still persists (Census of India, 2021).

Literacy Trends (Bihar)

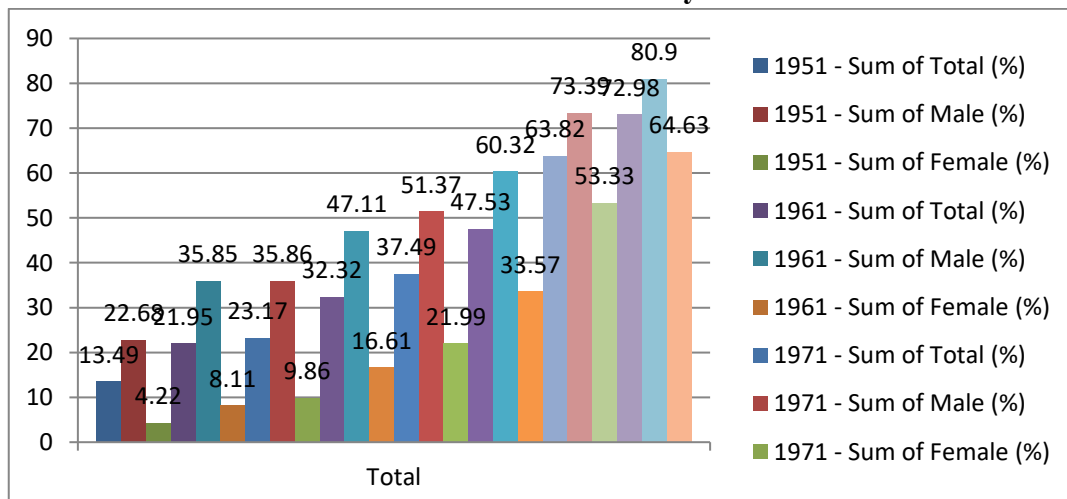
- Overall literacy (2021): ~72.98%
- Male literacy: ~80.9%
- Female literacy: ~64.6%
- Gender gap: ~16.3%

Despite improvement, challenges remain:

- Early marriage
- Social prejudices
- Lack of infrastructure

Women Literacy in Bihar

Table 2: Growth in Literacy Rate



Female literacy has improved significantly:

- 1951: 4.22%
- 2011: 53.33%
- 2021: ~64.63%

Government initiatives like:

- Mid-day meals
- Free education
- Scholarships
- Distribution of books and uniforms

have increased enrollment and reduced dropout rates among girls. Female literacy has increased due to government initiatives such as mid-day meal schemes, free education, and scholarships (Mehrotra, 2006).

Socio-Economic Background of Students

According to analysis age distribution of students shows that the majority fall within the **9–12 years age group (54.13%)**, followed by **12–15 years (38.53%)**. A very small proportion of students belong to the **6–9 years group (6.42%)**, while only **0.92%** are in the **15–18 years category**.

Table 3: Age Distribution

Age Group	Number	Percentage
6–9	35	6.42%
9–12	295	54.13%
12–15	210	38.53%
15–18	5	0.92%
Total	545	100%

Analysis by other

This indicates that most students are concentrated in the middle age groups of elementary education. The very low percentage in the 15–18 age group suggests **high dropout rates after early schooling** or limited continuation into higher classes. The data also reflects a relatively improved enrollment pattern in primary and upper primary levels.

The caste composition reveals that the largest group of students belongs to **OBC/EBC (43.11%)**, followed by **General Category (24.17%)** and **Muslim students (20.93%)**. Students from **Scheduled Castes (11.52%)** are present in moderate numbers, while **Scheduled Tribes (0.26%)** have negligible representation.

Table 4: Caste Distribution

Caste	Number	Percentage
SC	174	11.52%
ST	2	0.26%
OBC/EBC	217	43.11%
Muslim	79	20.93%
General	73	24.17%

Caste	Number	Percentage
Total	545	100%

Analysis by other

This distribution highlights that socially and educationally backward classes (OBC/EBC) form the majority of the student population. The presence of SC and Muslim students indicates some level of inclusivity; however, the extremely low participation of ST students points to social exclusion or geographical limitations. Overall, the data reflects the **diverse but unequal social composition** of students.

Income of Parents: - The income distribution shows that a vast majority of parents (**87.34%**) fall within the **₹3000–6000 income group**. Only a small percentage belongs to higher income groups: **6.61%** (₹6000–9000), **4.59%** (₹9000–12000), and **1.47%** (₹12000–15000).

Table 5: Income of Parents

Income (₹)	Number	Percentage
3000–6000	476	87.34%
6000–9000	36	6.61%
9000–12000	25	4.59%
12000–15000	8	1.47%
Total	545	100%

According other Analysis

The majority of students belong to low-income families, which restricts their access to private education and quality learning resources. This clearly indicates that most students come from economically weaker sections. Low household income restricts access to private schooling, quality educational materials, and additional learning support such as tuition. Economic hardship is therefore a major factor affecting educational opportunities, performance, and continuity.

Conclusion

The study shows that socio-cultural factors such as caste, class, gender, and economic conditions significantly influence elementary education in Bihar. Although there has been improvement in literacy and enrolment, especially among girls, challenges like poverty, gender discrimination, and lack of infrastructure still persist.

Government initiatives have played an important role in increasing access to education, but more efforts are needed to ensure quality and equality in education.

From the above analysis, it can be concluded that socio-cultural factors such as caste, class, gender, and economic conditions play a crucial role in shaping elementary education in Bihar.

Although government initiatives have improved enrolment and literacy rates, especially among girls, several challenges still remain. Poverty, gender discrimination, lack of infrastructure, and regional disparities continue to hinder educational development.

However, there is a positive change in society, as caste barriers are gradually decreasing and more girls are enrolling in schools. Education has the potential to bring social change, and strengthening elementary education is essential for the overall development of Bihar.

The study highlights that socio-cultural factors such as caste, class, gender, and economic status play a significant role in shaping elementary education in Bihar. While there have been improvements in enrollment and literacy rates, especially among girls, several challenges still persist.

Government initiatives have contributed to increasing access to education and promoting inclusivity. However, issues like poverty, gender discrimination, lack of infrastructure, and regional disparities continue to hinder educational development.

To achieve universal and equitable education, it is essential to address these socio-cultural barriers through effective policies, awareness programs, and improved infrastructure. Education has the potential to transform society, and strengthening elementary education is crucial for the overall development of Bihar.

References:

1. Alexander, J. M. (2003). *Inequality, poverty and affirmative action: Contemporary trends in India*. United Nations University.
2. Gandhi, N., & Shah, N. (1991). *The issues at stake: Theory and practice in the contemporary women's movement in India*. Kali for Women.
3. Jeffrey, C., Jeffrey, R., & Jeffrey, P. (2004). Degrees without freedom. *Development and Change*, 35(5), 963–986.
4. Mathur, S. S. (2013). *A sociological approach to Indian education*. Vinod Pustak Mandir.
5. Mehrotra, S. (2006). *The economics of elementary education in India*. Sage Publications.
6. Nurullah, S., & Naik, J. P. (1951). *A history of modern education in India*. Macmillan.
7. Ruhela, S. P., & Nayak, R. K. (2014). *Philosophical and sociological foundations of education*. Agrawal Publications.
8. Shah, B. V., & Shah, K. B. (1998). *Sociology of education*. Rawat Publications.
9. Census of India. (2021). *Literacy statistics*. Government of India.