

# Transforming Teachers Roles in AI-Enhanced Classrooms: A Framework for 21st-Century Pedagogy

Sandhyarani Dhupal<sup>1</sup>, Chinmayee Rout<sup>2</sup>

<sup>1</sup>Assistant professor in Educational Studies, M.P.C Autonomous College, Baripada, Mayurbhanj, Odisha

<sup>2</sup>Academician

## Abstract

The integration of Artificial Intelligence (AI) into contemporary classrooms has initiated a significant transformation in 21st-century teaching and learning practices. This study examines the evolving role of teachers in AI-enhanced learning environments and explores how AI can be strategically utilized to strengthen pedagogy rather than replace human educators. Through an extensive review of existing literature, the research outlines the current landscape of AI in education, highlighting its benefits such as personalized learning pathways, data-driven instruction, and reduced administrative workload alongside notable challenges including ethical concerns, digital disparities, and limited teacher preparedness. A collaborative framework is proposed in which AI functions as a supportive tool that complements human expertise, fostering flexible, student-centered, and adaptive learning experiences. Using a mixed-methods approach, the study analyzes student performance, captures teacher experiences with AI integration, and measures stakeholder satisfaction to assess the practical implications of this framework. The implementation model further details the necessary infrastructural support, professional development initiatives, and policy considerations required for a smooth transition to AI-supported classrooms. Findings indicate that AI enhances instructional processes while reaffirming the irreplaceable role of teachers in building emotional connections, nurturing creativity, and promoting critical thinking. Overall, the study underscores AI's transformative potential in education while acknowledging challenges that call for continuous teacher adaptation and robust policy reforms. This work contributes valuable insights for educators, policymakers, and researchers seeking to create a balanced, human-centered, and technologically enriched learning ecosystem.

**Keywords:** Artificial Intelligence, Teacher Roles, 21st-Century Classroom, Educational Technology Integration, AI-Enhanced Pedagogy

## 1. Introduction

One of the 21st century's most significant trends is the use of artificial intelligence (AI) in education. Learning analytics, virtual assistants, intelligent tutoring systems, and machine learning algorithms are examples of AI technologies that are being used more and more to enhance educational outcomes and personalize learning experiences. AI has the ability to completely transform education by facilitating flexible, student-centered learning environments, claim Holmes, Bialik, and Fadel (2019). According to Luckin (2018), rather than taking the place of teachers, AI enhances their talents, which promotes the

growth of human intelligence. UNESCO (2023) and OECD (2021) have also emphasized how important AI is to changing institutional frameworks and educational methods. The introduction of Artificial Intelligence (AI) into classrooms has brought about a revolution in 21st-century teaching methods. In order to clarify how educators might use these technological developments to improve the learning process, this study explores the significant effects of AI on teacher responsibilities and pedagogy. AI should be used in conjunction with teachers, not in place of them. This approach fosters a customized and flexible learning environment by meeting the various needs of pupils. In the context of generative AI, the development of teachers' roles and agencies can be viewed as a dynamic, multifaceted process that is fueled by the interaction between instructors' perceptions, acceptance, knowledge, and practices and the nature of AI technology.

These models highlight the continuum of new technology adoption, which starts with awareness and progresses to active engagement and leadership. This continuum is especially noticeable in the case of AI because of the intricacy of the technology and its significant influence on instructional strategies. This framework, which identifies four distinct stages Awareness, Exploration, Integration, and Innovation each of which corresponds to a specific role (i.e., GenAI Observer, Adaptor, Integrator, and Innovator) is not arbitrary; rather, it is the result of a thorough examination of how AI fundamentally changes the educational landscape and, in turn, educators' professional identities and practices (Zhai.X,2024).

AI differs from previous educational technology in that it can produce content independently, be adaptable, and be included into complex pedagogical processes. Unlike earlier versions of AI, Generative AI presents fresh possibilities for individualized learning, real-time student participation, and the production of original material. These capabilities necessitate a reconfiguration of traditional teaching roles. Teachers have to deal with AI's consequences for classroom dynamics, pedagogy, and ethics in addition to its technological aspects. The steps indicated in this framework from initial experimentation and passive observation to full integration and, ultimately, the pioneering of new pedagogical paradigms are informed by the observed progression in teachers' interactions with AI as documented in the literature. Traditional teaching models largely focused on content delivery and rote memorization. However, with the introduction of AI-enhanced classrooms, the role of teachers is shifting towards facilitation, mentoring, and personalized support. Woolf (2020) stated that intelligent educational systems allow teachers to focus more on higher-order thinking skills, creativity, and emotional development of learners. In this context, it becomes essential to study how teaching roles are being transformed and what pedagogical frameworks are required to prepare educators for the demands of 21st-century education. AI-enhanced classrooms are transforming teacher roles from knowledge transmitters to facilitators, mentors, and designers of AI-driven, personalized learning experiences. A 21st-century pedagogy framework positions AI as a collaborative tool, requiring teachers to adopt roles like "AI Co-conspirator" or "Navigator" to guide critical thinking, manage ethical AI use, and foster human-machine collaboration.

### **AI in Education: Revolutionizing Learning**

Artificial intelligence has completely changed the way pupils study. To Teach, TutorAI, Unschooler, Adaptive Academy, and other AI-powered personalized learning platforms can adjust to each student's unique learning style and speed to provide a tailored educational experience. From intelligent content recommendations to adaptive evaluations, it enhances education's efficacy and efficiency in a number of

ways. AI systems assess students' performance and adapt the curriculum to their particular requirements. By guaranteeing that nobody is left behind, this fosters an inclusive learning environment. These AI-powered solutions also provide prompt feedback and assistance, mimicking a one-on-one tutoring setting. This challenges top achievers as well as failing students. Thus, ChatGPT and other AI systems have immense potential to transform education. This advancement is demonstrated by the establishment of India's first AI school in Kerala. But rather than taking the place of instructors, who are vital, AI must be used to improve education. Combining technology with traditional teaching methods can guarantee a comprehensive and successful education, highlighting the continued significance of interpersonal connection in the learning process. Let's examine how teachers' roles are evolving in an AI-enhanced learning environment.

### Framework for Transforming Teacher Roles in AI Classrooms

“One looks back with appreciation to the brilliant teachers, but with gratitude to those who touched our human feelings. The curriculum is so much necessary raw material, but warmth is a vital element for the growing plant, and for the soul of the child.” – Carl Jung

Value-based education is more important than ever in the era of AI. AI has two sides. It is dependent upon the user's goals. Thus, a competent teacher should prioritize teaching children moral values, empathy, and social responsibility. It can help pupils become responsible global citizens who are aware of how their actions affect society as a whole. Teachers must therefore instill universal human values in their students by taking into account the profound effects of technology on society. This will enable them to discern good from wrong and behave accordingly. When implementing AI, educators move through four crucial phases: Observer, Adopter, Collaborator, and Innovator.

### Core Pedagogical Roles:

- **Learning Ecosystem Designer:** Designing AI-integrated, personalized learning environments that adapt to student needs.
- **Mentor/Guide:** Focusing on uniquely human elements such as mentoring, emotional support, and fostering critical thinking skills.
- **AI Co-conspirator (Collaborator): Engaging** in "symbiotic collaboration" where teachers and AI work together, with teachers evaluating and guiding AI outputs.
- **Value Leader/Ethical Guide:** Ensuring ethical AI usage, managing bias, and teaching AI literacy and responsible citizenship.

### Key Competencies (UNESCO Framework):

- Human-centered mindset.
- Ethics of AI.
- AI foundations and applications.
- AI-enhanced pedagogy.
- AI For Professional Learning

### Key Feature of 21st Century Pedagogical Shifts

- **From Content Delivery to Skill Development:** Shifting focus from memorization to teaching students how to prompt, verifies, and critically evaluates AI-generated content.

- **Personalization & Assessment:** Using AI for automated, real-time feedback and to tailor curriculum to individual student paces.
- **Professional Development:** Constant up skilling is required to understand AI capabilities and limitations to maintain the central, human-led role in education.

### Objectives of the Study

The major objectives of this review paper are:

1. To examine the impact of AI on contemporary teaching and learning practices.
2. To analyze the evolving roles of teachers in AI-enhanced classrooms.
3. To identify the competencies required for 21st-century educators.
4. To explore challenges and future directions in AI-supported pedagogy.

### Research Methodology

This study is based on a **systematic review of secondary literature**. Research articles, reports, policy documents, and conference proceedings published between 2015 and 2024 were collected from databases such as Google Scholar, Scopus, ERIC, and Web of Science. Keywords used included *AI in education*, *AI-enhanced classrooms*, *digital pedagogy*, and *teacher role transformation*. The literature was analyzed thematically to identify patterns, gaps, and emerging frameworks.

### AI Enhancing Classroom Learning

The role of instructors in the classroom is a topic of increasing discussion as AI gains popularity. When students use AI in the classroom or at home for personalized learning, will teachers become obsolete or what will their position change? In our opinion, the use of AI in the classroom will only enable instructors to significantly improve learning outcomes and their own professional efficacy if they carefully modify and incorporate these tools. Let's examine how AI in the classroom can enable educators to improve student learning:

#### 1. Connecting Access and Equity: -

Millions of students nowadays experience marginalization as a result of geographical, political, or economic difficulties. AI educational technology is a crucial lifeline in these situations, particularly when resources are limited or nonexistent. With the help of AI-powered platforms, learning can be customized at scale, releasing the trapped intelligence of driven students who are only limited by external factors. However, teachers can better support kids who might not succeed in traditional settings by utilizing AI in the classroom for personalized curriculum delivery and progress tracking. This change promotes educational fairness by enabling adaptive learning and high-quality resources to be accessed regardless of local infrastructure or physical location.

#### 2. Comparing Active and Passive Learning: -

A major advantage of AI in the classroom is a shift from passive, lecture-driven instruction to more active learning modalities. The realities of today's workforce, where problem-solving and teamwork are valued above rote memorization, are reflected in the collaborative, interactive, and co-created learning experiences made possible and encouraged by AI tools. AI-adaptive platforms allow students to engage, share ideas, and mold their education, while professors facilitate and direct these interactions instead of just imparting knowledge. Teachers that use AI-based learning models can help students acquire critical skills for their future employment.

### **3. Enhancement rather than Replacement of Intelligence: -**

Contrary to popular belief, AI enhances instructors rather than replaces them. It eases the load of repetitive calculations and duties. While instructors are particularly prepared for curriculum creation, inspiration, and encouragement, AI in the classroom is well-suited for knowledge delivery, assessment, and data analysis. Teachers can concentrate on higher-value tasks like developing intrinsic motivation and creating interesting, context-rich courses thanks to this division of labor. Effective educators collaborate with AI partners to co-create learning experiences, tailoring interventions and support based on data analytics findings.

### **4. Personalization via Data Utilization: -**

Data-driven personalization is one of AI's best features. Even in huge classrooms, digital learning systems collect detailed data on specific pupils. This makes it possible for educators to examine individual learner's learning pathways, knowledge states, and behavioral patterns. Teachers go beyond "one-size-fits-all" instruction by tailoring their assistance and interventions in response to real-time data, knowing exactly when and how a student needs aid. Regardless of a student's starting point, AI in the classroom enables teachers to optimize their potential for progress.

### **5. Balancing Formal and Informal learning: -**

AI technologies facilitate the integration of structured classroom instruction with customized, casual extracurricular activities. AI-enabled informal learning acknowledges family, culture, regional perspectives, and even individual student needs, whereas society relies on uniform information and ideals. Students can learn at their own pace and revisit content with the support of teachers who love both worlds and design for flexibility. Additionally, this enhances their overall growth by enabling them to augment their coursework.

### **AI-Enhanced Classrooms: Concept and Features**

AI-enhanced classrooms are educational settings that include artificial intelligence technologies to enhance instruction. The main characteristics consist of:

- Personalized training with intelligent tutoring systems
- Adaptive learning systems for personalized content distribution
- Acquiring analytics to track developments in real time
- AI chatbots and virtual assistants to assist students
- Automated mechanisms for feedback and grading

These features enable flexible, data-driven, and student-centered learning experiences.

### **Practical Strategies for Teachers to Use AI in the Classroom**

- Teachers can work with peers, attend focused training sessions, spend time investigating and playing with the newest AI tools, and exchange best practices. As noted in NEP 2020, these initiatives support teacher capacity building in addition to improving classroom instruction.
- By employing AI to manage standard administrative tasks like scheduling, attendance monitoring, and grading. Teachers can devote more time to deeper student involvement and innovative class planning.
- Teachers are still crucial for developing motivation, emotional intelligence, ethical advice, and creative curriculum design, even though AI can help with tasks. They can concentrate on abilities that technology cannot take the place of.

- Teachers can use AI-powered learning analytics to monitor students' progress in real time, spot learning gaps, and modify their pedagogical approaches for more individualized instruction and successful results.
- Teachers may create educational experiences where AI-powered exercises supplement and expand on what is taught in the classroom.
- Teachers should promote the ethical application of AI, making sure that learning is equitable, student data privacy is safeguarded, and all students gain inclusively from technology-enhanced education.

### **Transformation of Teacher Roles**

The conventional role of teachers is changing as artificial intelligence (AI) is included into education. Teachers are now required to support technology-enhanced learning environments in a variety of ways, rather than just imparting knowledge. Instead of being replaced, teachers take on the roles of mentors, advisors, and learning facilitators. By using AI approaches, they can monitor students' progress, identify learning trends, and provide customized treatments. In areas where AI is currently deficient, such as emotional intelligence, teamwork, and effective communication, teachers play a critical role. Teachers must therefore focus on fostering students' critical thinking, problem-solving, and creative skills in addition to providing value-based, high-quality education, which is essential for success in the twenty-first century, in order to be relevant and fulfill the objective of true education.

1. **Teacher as a Learning Facilitator:** - Teachers serve as facilitators in AI-supported classrooms, guiding students along individualized learning pathways that AI systems have designed. Instead of just imparting knowledge, they promote investigation, dialogue, and critical thinking. Teachers foster deeper comprehension and problem-solving abilities in their students by encouraging active learning.
2. **Teacher as an Instructional Designer:** - By arranging and preparing educational activities that integrate AI tools with conventional teaching techniques, educators also serve as instructional designers. To increase student engagement and improve learning results, they create blended learning environments that incorporate digital resources, adaptive learning platforms, and classroom activities.
3. **Teacher as Data Analyst:** AI-powered learning systems provide a lot of data regarding student performance, development, and learning trends. To determine each student's strengths, limitations, and learning requirements, teachers examine this data. They can adjust teaching methods, tailor education, and offer focused academic support based on these observations.
4. **Teacher as Mentor and Counselor:** Teachers' human role is still crucial, even in classrooms with a lot of technology. By offering pupils emotional support, inspiration, and direction, teachers serve as mentors and counselors. They support students in developing positive attitudes toward studying, gaining confidence, and managing academic stress.
5. **Teachers as Ethical and Digital Guides:** Teachers are crucial in encouraging the ethical application of AI and digital technology. They educate students about digital citizenship, online safety, and ethical issues related to technology. By guiding students to use AI responsibly, teachers help develop informed and responsible digital citizens.

### **Proposed Framework for 21st-Century Pedagogy**

To effectively integrate Artificial Intelligence and modern technologies into education, a multidimensio-

nal framework is needed. This paper proposes a **four-dimensional framework** that helps transform teaching practices and supports teachers in adapting to the demands of 21st-century education.

1. **The Pedagogical Dimension:** The pedagogical dimension places a strong emphasis on learner-centered teaching strategies in which students take an active role in their education. Students are encouraged to investigate ideas, pose questions, and hone their problem-solving abilities through approaches like inquiry-based learning, project-based learning, and collaborative learning. Instead of only imparting knowledge, teachers in this method mentor and assist pupils.
2. **The Technological Dimension:** The development of teachers' digital competency is the main objective of the technology dimension. To use AI tools, digital platforms, and educational technology successfully, teachers require ongoing professional development and training. This allows them to develop dynamic and captivating learning environments and incorporate technology into instruction in a meaningful way.
3. **The Data-Driven Dimension:** Data is essential to enhancing teaching and learning in AI-enhanced education. Digital platform-generated learning analytics offer insights into students' performance, learning trends, and development. Instructors can use this information to tailor lessons, make evidence-based decisions, and offer prompt academic support.
4. **The Social and Ethical Dimension:** The ethical and social dimension emphasizes how crucial equity, diversity, and responsible technology use are to education. Instructors need to make sure that AI tools are applied morally and that every student has an equal chance to gain from technology. A balanced and socially conscious learning environment is facilitated by encouraging digital responsibility, inclusivity, and ethical awareness.

Together, these four dimensions- pedagogical, technological, data-driven and ethical & socially responsibility provide a comprehensive framework for transforming teaching roles and preparing educators for effective teaching in the 21st-century digital learning environment.

### **Teachers and AI Together can transform Learning**

The goal of integrating AI into classrooms and the larger educational system is to empower teachers rather than replace them. Teachers that use AI technology create more opportunities for lifelong learning, equity, and student participation. Teachers are positioned to provide more individualized, engaging, and successful instruction than ever before by fusing human insight with technology toolkits. In the end, a teacher's insight, originality, and compassion cannot be replaced. AI is a potent ally that increases the impact on each student, models best practices, and broadens the teacher's reach. The future of education in the AI era is both promising and deeply human with careful adaptation and teamwork.

### **Competencies required for 21st-century educators.**

21st-century educators must possess competencies focusing on technology integration, student-centered pedagogy, and the "4 Cs" (critical thinking, creativity, collaboration, communication). Key skills include digital literacy, adaptability, social-emotional learning, and facilitating project-based learning to prepare students for a rapidly changing world. These educators act as mentors and creators of interactive, inclusive environments.

### **Key 21st Century Educator Competencies**

- **Digital Literacy and Technology Integration:** Teachers must effectively use digital tools to enhan-

ce learning, teach digital citizenship, and manage virtual learning environments.

- **Facilitator of Learning:** Moving away from being the "sage on the stage," educators must become facilitators who encourage student-centered learning, project-based approaches, and inquiry-based learning.
- **The 4 Cs (Critical Thinking, Creativity, Collaboration, Communication):** Educators must foster these skills by encouraging students to analyze problems, create innovative solutions, work together, and communicate effectively.
- **Adaptability and Flexibility:** The capacity to adapt teaching strategies to diverse learner needs and shifting educational technologies.
- **Social-Emotional Learning (SEL) and Empathy:** Supporting students' emotional and mental well-being, fostering emotional intelligence, and building a positive, inclusive classroom culture.
- **Data-Driven Decision Making:** Using student data and assessment to personalize instruction and evaluate learner performance.
- **Lifelong Learning and Professional Growth:** Engaging in continuous professional development to stay current with modern teaching skills and pedagogical advancements.
- **Networking and Collaboration:** Collaborating with colleagues, engaging with the community, and building relationships with parents to support student welfare.

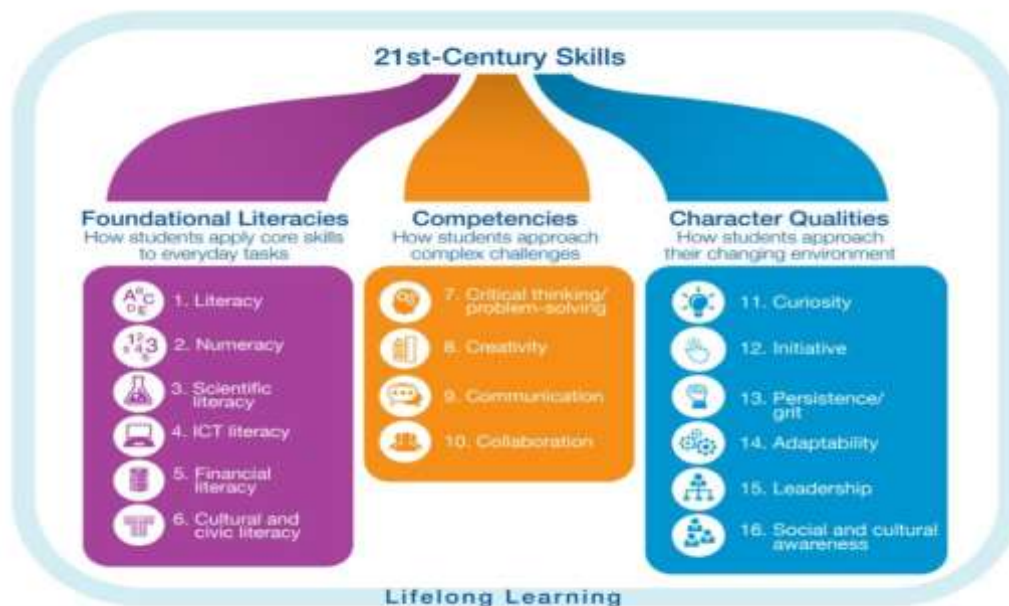


Figure-1

## Challenges in AI-Enhanced Teaching

The integration of Artificial Intelligence (AI) in education offers many opportunities, but it also presents several challenges that need careful attention. Some of the major challenges are described below:

1. **Lack of Technical Training among Teachers:** - Many teachers are not adequately trained to use AI-based tools and digital platforms in the classroom. Limited digital literacy and lack of professional development programs make it difficult for educators to effectively integrate AI into their teaching practices. Continuous training and capacity-building programs are essential to help teachers confidently adopt AI technologies.

2. **Resistance to Pedagogical Change:** - The adoption of AI often requires a shift from traditional teaching methods to more technology-driven and student-centered approaches. Some educators may resist these changes due to fear of technology, uncertainty about its effectiveness, or concern about losing control over the teaching process. Encouraging a positive attitude toward innovation and providing institutional support can help overcome this resistance.
3. **Data Privacy and Security Issues:** - AI-based educational platforms collect and analyze large amounts of student data, including learning patterns, performance records, and personal information. If not properly managed, this data may be vulnerable to misuse, unauthorized access, or cyber threats. Therefore, strong data protection policies and secure technological systems are necessary to safeguard student information.
4. **Digital Divide and Unequal Access to Technology:** - One of the biggest challenges in AI-enhanced teaching is the digital divide. Many students and teachers, particularly in rural or economically disadvantaged areas, lack access to reliable internet, digital devices, or advanced technological infrastructure. This inequality can widen the gap in educational opportunities and limit the benefits of AI-based learning.
5. **Ethical Concerns Related to Algorithmic Bias:** - AI systems are developed using large datasets and algorithms that may sometimes reflect existing social or cultural biases. As a result, AI tools may unintentionally produce biased recommendations or assessments. Ensuring transparency, fairness, and ethical design in AI systems is crucial to prevent discrimination and maintain trust in educational technologies.
6. **Balance Technology with Human Insight:** - Avoid over-reliance on AI, ensure that technology enhances teaching without diminishing the crucial role of teachers themselves.
7. **Address Algorithmic Bias:** - Critically evaluate AI tools being enabled for classrooms for potential biases. This makes sure that students from diverse backgrounds receive fair and inclusive support.
8. **Keep Pedagogy Future-Ready:-** Stay informed about emerging trends in educational technology to ensure teaching methods remain relevant, effective, and adaptable for the future.

Addressing these challenges requires strong institutional support, effective policies, teacher training programs, and ethical guidelines to ensure that AI technologies are used responsibly and inclusively in education.

## Discussion

The review emphasizes that AI serves as an enabler rather than a substitute for educators, changing their responsibilities to that of learning facilitators, educational experience designers, and emotional support givers. The suggested paradigm emphasizes the necessity of smooth integration through institutional support. The effective application of AI-enhanced teaching depends on sufficient training, appropriate infrastructure, and good teacher attitudes. The results show that students are depending more and more on AI tools for rapid answers and easier comprehension of difficult subjects, which improves efficiency, comprehension, and academic success. Nevertheless, worries about over-reliance and diminished critical thinking abilities still exist. Although many students say they utilize autonomous thinking, a significant percentage substantially relies on AI, underscoring the necessity for appropriate use. Although there are still issues like limited exposure, ethical concerns, and fear of losing human connection, teachers are also aware of the advantages of AI, such as improved instruction, automation of monotonous jobs, and data-driven insights for individualized learning. The necessity for thorough training and easily accessible

technologies is further highlighted by the considerable disparity in AI literacy between teachers and pupils. While both parties recognize that AI has the potential to increase productivity and customize education, they also emphasize how crucial it is to address concerns like bias, privacy, and fair access in order to stop inequality from growing. Overall, the study highlights a balanced strategy that preserves the human element in education while utilizing technical advantages by using AI to supplement rather than replace teachers. AI can greatly improve teaching and learning processes with the right direction, ethical frameworks, and institutional backing, but its long-term success will depend on tactics that support teachers' empowerment and holistic student development. As AI develops and expands its role in education, future research should concentrate on larger samples and long-term effects. This will eventually confirm that teachers will continue to be crucial, with AI acting as a potent tool to increase rather than decrease their importance.

### **Conclusion**

Teachers are no longer replaced by AI; instead, they become mentors, facilitators, and creators of meaningful learning experiences. It boosts student learning results, increases efficiency, and facilitates individualized training. A lot of students use AI technologies to make difficult subjects easier to understand, finish assignments faster, and perform better academically. However, worries about relying too much on AI could hinder the growth of critical thinking and problem-solving abilities. AI helps teachers by automating repetitive work, providing data-driven insights, and enabling creative teaching strategies like adaptive exams.

This enables them to concentrate more on individualized support and student involvement. Considering these benefits, there are also issues, such as inadequate infrastructure, inadequate training, and moral dilemmas like less human interaction and privacy. There is a clear disparity in AI literacy between pupils and teachers, underscoring the need for institutional assistance and professional development. Both parties understand how crucial it is to employ AI sensibly in order to prevent abuse and dependence. All things considered, AI has enormous potential to revolutionize education by increasing the effectiveness and interactivity of learning. However, a balanced strategy that incorporates technology while maintaining the crucial human components of teaching and learning is necessary for its effectiveness. Even though AI is a very useful tool, human interaction is what imparts the moral compass, empathy, and wisdom needed to navigate a constantly changing future. As we move forward, let us keep in mind that education is a very human endeavor that transcends algorithms and code. AI-enhanced classrooms signify a change in the educational paradigm. Teachers' responsibilities are changing from traditional curriculum delivery to mentorship, ethical counseling, and facilitating. The suggested framework offers a methodical way to help educators adjust to contexts that incorporate AI. The empirical validation of such frameworks in various educational situations should be the main focus of future study.

In summary, this study not only highlights how AI has the ability to completely transform education, but it also recognizes the continued difficulties and emphasizes how important it is for teachers to constantly adapt to the ever-changing educational environment. With implications for educators, policymakers, and researchers alike, this study adds to the conversation about the mutually beneficial link between AI and education.

## References

1. Dennard, A. (2024). *AI enhanced pedagogy: Examining how teachers elevate their practice through innovative lesson design* (Doctoral dissertation, Lamar University-Beaumont).
2. Dey, S. (2025). How is Artificial Intelligence Transforming Pedagogical Approaches in 21st-Century Classrooms?. Available at SSRN 5273635.
3. Dutta, P. (2026). Reimagining Teacher Education in India: AI-Enabled Pedagogy, Assessment, and Human–AI Collaboration for 21st Century Classrooms.
4. Holmes, W., Bialik, M., & Fadel, C. (2019). *Artificial Intelligence in Education: Promises and Implications for Teaching and Learning*.
5. Luckin, R. (2018). *Machine Learning and Human Intelligence: The Future of Education*.
6. OECD. (2021). *AI and the Future of Education: Changing Teaching and Learning*.
7. Shahzad, S. A., Raza, M. M., Malhi, S. D., ul Ain, Q., & Malhi, D. K. (2025). Integrating Artificial Intelligence To Foster Critical Thinking And Problem-Solving In 21st-Century Classrooms. *Research Journal for Social Affairs*, 3(5), 635-648.
8. Siddiqui, M. T., Mansoori, M. V., Siddiqui, M. A., & Yadav, A. (2025). AI-enabled pedagogy: Advancing education through innovative teaching tools and the AITEACH model. *Journal of Informatics Education and Research*, 5(1), 2526-2539.
9. Sulolipu, A. A., Syata, W. M., Ampa, A. T., Ram, S. W., Rusmiyati, V., Sabillah, B. M., & Thayeb, A. M. D. R. (2025). *The AI-Enhanced Educator: Multidisciplinary Approaches to Smart Teaching*. CV Eureka Media Aksara.
10. Taufikin, M. S. I., Azifah, N., Nikmah, F., & Kuanr, J. (2024, April). The impact of AI on teacher roles and pedagogy in the 21st century classroom. In *2024 International Conference on Knowledge Engineering and Communication Systems (ICKECS)* (Vol. 1, pp. 1-5). IEEE.
11. UNESCO. (2023). *Guidelines for AI in Education and Research*.
12. Woolf, B. P. (2020). *Building Intelligent Interactive Tutors: Student-Centered Strategies for Revolutionizing E-Learning*.
13. Zhai X.(2024) transforming teachers roles and agencies in the era of generative AI: perceptions, acceptance, knowledge, and practices