

Devi Ahilyabai Holkar's Model of Good Governance: Ethical Leadership and Relevance in Contemporary India

Ms. Kaveri Patil

Student, History, Malwanchal University

Abstract:

Ahilyabai Holkar is widely regarded as one of the most visionary and welfare-oriented rulers in Indian history. Her governance model was founded on justice, transparency, accountability, decentralization, public welfare, and women empowerment. This research paper critically examines the principles of good governance practiced during her administration in the eighteenth century and evaluates their relevance in present-day democratic governance. The study further analyzes how her ethical and citizen-centric administrative approach can contribute to addressing contemporary governance challenges such as corruption, inequality, administrative inefficiency, and social injustice. The research adopts a qualitative and analytical methodology based on secondary sources including books, journal articles, government reports, and scholarly publications. The findings reveal that Ahilyabai Holkar's governance reflected advanced administrative principles much before the emergence of modern democratic theories. Her emphasis on justice, welfare administration, decentralized governance, women leadership, and sustainable development remains highly relevant in the current administrative framework. The paper concludes that Ahilyabai Holkar's governance philosophy offers a valuable model for future governance systems aimed at achieving transparency, inclusiveness, ethical leadership, and sustainable development.

Keywords: Good Governance, Ahilyabai Holkar, Ethical Leadership, Public Administration, Women Empowerment, Welfare State, Decentralization, Sustainable Development, Indian Administration, Citizen-Centric Governance.

Introduction:

Good governance is considered the cornerstone of an effective and progressive state. In modern political science and public administration, good governance refers to a system that ensures transparency, accountability, participation, justice, responsiveness, and welfare-oriented administration. Although the concept gained prominence in contemporary democratic systems, Indian history presents several remarkable examples of ideal governance practices. Among them, the administration of Ahilyabai Holkar occupies a unique and respected place. Ahilyabai Holkar ruled the Malwa kingdom from 1767 to 1795 and established an administration rooted in justice, equality, public welfare, and moral responsibility. Despite living in a patriarchal society, she emerged as a capable and visionary ruler whose governance promoted peace, prosperity, and social harmony. Unlike many rulers of her time who focused primarily on territorial expansion and military strength, Ahilyabai concentrated on people-centric administration and welfare-oriented development. Contemporary governance systems continue to face challenges such as corruption,

bureaucratic inefficiency, social inequality, gender discrimination, and declining public trust in institutions. In this context, the governance philosophy of Ahilyabai Holkar becomes highly relevant. Her administrative approach demonstrates how ethical leadership, decentralization, welfare policies, and citizen participation can strengthen governance and ensure social justice. This paper examines the governance principles adopted by Ahilyabai Holkar and evaluates their relevance in present and future governance systems.

Objectives of the Study :-

- To examine the governance model of Ahilyabai Holkar.
- To analyze the principles of good governance practiced during her reign.
- To evaluate the relevance of her governance philosophy in contemporary India.
- To study the future applicability of her administrative principles.
- To highlight the importance of ethical and welfare-oriented leadership.

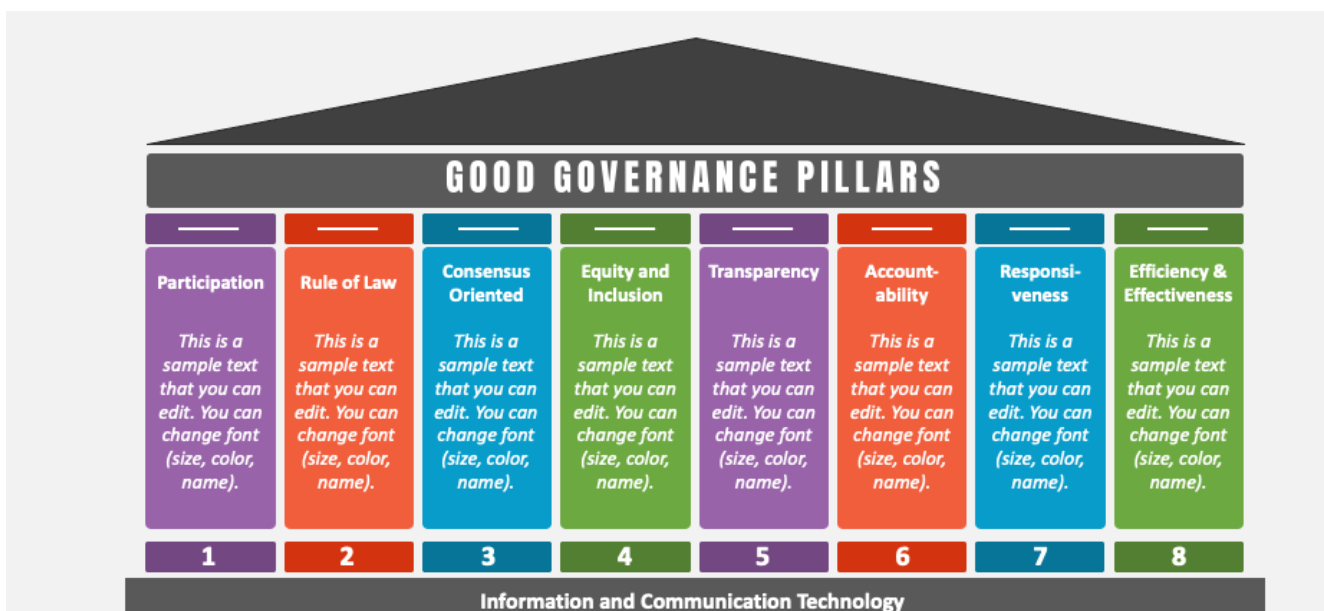
Research Methodology

The present study is descriptive and analytical in nature. It is based entirely on secondary sources of data, including books, journal articles, research papers, government publications, and scholarly studies related to Ahilyabai Holkar and good governance. The study follows a qualitative research approach to interpret historical, political, and administrative dimensions of governance.

Concept of Good Governance

Good governance refers to the effective and efficient management of public institutions and resources for the welfare of society. It emphasizes accountability, transparency, rule of law, participation, equity, responsiveness, and inclusiveness in administration.

The major characteristics of good governance include:



Modern democratic systems consider good governance essential for sustainable development and social stability. Scholars of public administration argue that ethical leadership and citizen-centric governance st-

rengthen democratic institutions and improve public trust.

Historical Background of Ahilyabai Holkar :

Ahilyabai Holkar was born in 1725 in Chaundi village of present-day Maharashtra. She married Khanderao Holkar, the son of Malhar Rao Holkar, founder of the Holkar dynasty. Following the death of her husband and father-in-law, she assumed administrative control of the Malwa kingdom in 1767.

Her reign transformed Malwa into one of the most prosperous and peaceful regions in India. She shifted the capital to Maheshwar and focused extensively on infrastructure development, agriculture, trade promotion, social welfare, and religious harmony. Historical accounts describe her administration as efficient, compassionate, and justice-oriented.

Principles of Good Governance in Ahilyabai Holkar's Administration :

- **Justice and Rule of Law** - Justice formed the foundation of Ahilyabai Holkar's administration. She personally heard public grievances and ensured impartial justice without discrimination based on caste, religion, or social status. Her court remained accessible to ordinary citizens, which strengthened public confidence in governance. The emphasis on fair and speedy justice resembles the modern concept of rule of law. Present-day governments can derive important lessons from her commitment to judicial fairness and administrative accountability.
- **Welfare-Oriented Administration** - Ahilyabai believed that the welfare of citizens was the foremost responsibility of a ruler. She invested heavily in public infrastructure such as roads, wells, temples, ghats, dharamshalas, and water reservoirs. These welfare measures improved agriculture, trade, and transportation. She also developed major pilgrimage centers including Kashi, Somnath, Ayodhya, and Gaya. Her governance reflected the principles of a welfare state where public resources were utilized for social development rather than personal luxury.
- **Decentralized Governance** - Ahilyabai Holkar adopted decentralized administration by delegating powers to local authorities and village officials. This reduced administrative burden and increased efficiency in governance. Local participation improved responsiveness and accountability. Her governance model closely resembles modern democratic decentralization and local self-governance. Present-day Panchayati Raj Institutions and urban local bodies reflect similar administrative principles.
- **Women Empowerment and Leadership** - Ahilyabai Holkar emerged as a symbol of women leadership in Indian history. She challenged patriarchal norms and demonstrated exceptional political and administrative capabilities. She encouraged women's participation in economic and social activities and supported widows and vulnerable groups. In the contemporary context, her leadership remains an inspiration for gender equality and women empowerment policies. Increasing women representation in politics and administration reflects similar democratic ideals.
- **Economic Administration and Taxation** - Ahilyabai maintained a balanced taxation system that protected farmers and traders from exploitation. Moderate taxation encouraged economic growth and increased public satisfaction. Stable administration and infrastructure development contributed significantly to trade expansion during her reign. She also promoted local industries, especially Maheshwari textile production, which generated employment opportunities. Her economic policies reflected the principles of inclusive and sustainable development.

- **Religious Harmony and Cultural Preservation** - Although Ahilyabai Holkar patronized Hindu religious institutions, she respected all religions and maintained communal harmony. Her reconstruction of temples and pilgrimage sites preserved India's cultural heritage and strengthened social unity. In modern governance, cultural preservation and religious tolerance continue to play a crucial role in maintaining national identity and social cohesion.

Relevance of Ahilyabai Holkar's Governance in Contemporary India :-

- **Ethical Leadership** - Modern governance systems frequently encounter issues such as corruption, misuse of authority, and political instability. Ahilyabai's administration was based on honesty, simplicity, and moral accountability. Her governance demonstrates that ethical leadership is essential for strengthening democratic institutions and restoring public trust.
- **Citizen-Centric Governance** - Ahilyabai maintained direct interaction with citizens and addressed their grievances effectively. Similarly, modern governance emphasizes public participation, digital governance, and efficient service delivery. The philosophy behind e-governance and grievance redressal systems reflects her principle of accessible administration.
- **Social Justice and Inclusiveness** Contemporary societies continue to face challenges such as poverty, caste discrimination, and gender inequality. Ahilyabai's policies promoted equality, social harmony, and inclusive development. Her governance aligns closely with constitutional values of justice, equality, and fraternity.
- **Importance in Rural Development** - Ahilyabai invested extensively in agriculture, irrigation, water conservation, and rural infrastructure. Modern rural development schemes focusing on sanitation, roads, irrigation, and employment reflect similar priorities. Her emphasis on sustainable rural development remains highly relevant in addressing rural poverty and migration.
- **Women-Led Governance** - The increasing participation of women in governance globally highlights the relevance of Ahilyabai's leadership model. She demonstrated that women are fully capable of managing administrative, military, and political responsibilities. Her legacy continues to inspire women empowerment and leadership initiatives.

Future Relevance of Ahilyabai Holkar's Governance :-

- **Sustainable Development** - Future governance systems require sustainable and inclusive development models. Ahilyabai's emphasis on welfare, infrastructure, economic balance, and water management corresponds with the objectives of sustainable development. Her governance philosophy aligns with several Sustainable Development Goals (SDGs), including poverty reduction, gender equality, clean water, and strong institutions.
- **Human-Centered Governance** - Technological advancements and artificial intelligence are transforming governance structures. However, governance must continue to remain ethical and human-centered. Ahilyabai's administration prioritized compassion, justice, and public welfare, values that remain essential in balancing technological progress with social responsibility.
- **Democratic Accountability** - Modern democracies require transparent and accountable institutions. Ahilyabai's governance demonstrated openness, responsiveness, and participatory administration. Future governance systems can adopt these principles to strengthen democratic legitimacy and institutional trust.

- **Cultural and Ethical Nationalism** - Ahilyabai promoted cultural heritage while maintaining social harmony. In an increasingly globalized world, preserving cultural identity alongside development remains essential for national unity. Her governance provides a balanced model where modernization and cultural preservation coexist harmoniously.

Findings of the Study :-

The major findings of the study are as follows:

- Ahilyabai Holkar practiced advanced principles of good governance long before modern democratic theories emerged.
- Her administration emphasized justice, accountability, decentralization, and welfare-oriented governance.
- Her governance model contributed significantly to economic growth and social harmony.
- Women leadership and empowerment formed a central feature of her administration.
- Her governance philosophy remains highly relevant for present and future administrative systems.

Conclusion

Ahilyabai Holkar remains one of the finest examples of ethical and welfare-oriented governance in Indian history. Her administration reflected transparency, justice, inclusiveness, accountability, and public welfare. Despite ruling in the eighteenth century, her governance principles closely resemble modern democratic values and contemporary theories of public administration. At a time when governance systems face challenges such as corruption, administrative inefficiency, social inequality, and declining public trust, Ahilyabai Holkar's governance offers valuable lessons for policymakers and administrators. Her emphasis on citizen welfare, women empowerment, decentralization, rural development, and ethical leadership demonstrates the importance of humane and responsible administration.

The future relevance of her governance lies in its human-centered and sustainable approach. Principles such as transparency, social justice, accountability, and cultural preservation are essential for building strong democratic societies. Therefore, Ahilyabai Holkar's governance should not only be remembered as a historical achievement but also studied as a guiding framework for contemporary and future governance systems.

References

1. Bhattacharya, A. K. (2012). *The life and times of Ahilyabai Holkar*. New Delhi: Historical Publications.
2. Duff, G. (2007). *History of the Marathas* (Vol. 2). New Delhi: Low Price Publications.
3. Fadia, B. L. (2020). *Good governance in India*. Agra: Sahitya Bhawan Publications.
4. Jawalekar, A. (2016). *Ahilyabai Holkar: A biography*. Mumbai: Popular Prakashan.
5. Khadpekar, V. (2014). *Ahilyabai Holkar*. New Delhi: Penguin India.
6. Laxmikanth, M. (2022). *Public administration*. New Delhi: McGraw Hill Education.
7. Maheshwari, S. R., & Avasthi, A. (2019). *Indian administration*. Agra: Lakshmi Narain Agarwal.
8. Sarkar, J. (2018). *Advanced study in the history of modern India*. New Delhi: Orient Blackswan.
9. Sen, S. N. (2010). *Maratha administration*. New Delhi: Atlantic Publishers.
10. Sharma, M. P. (2015). *Ancient and medieval Indian administration*. Jaipur: Rawat Publications.

11. Deshpande, R. (2019). Welfare administration under Ahilyabai Holkar. *Indian Journal of Historical Studies*, 14(2), 45–59.
12. Kulkarni, S. (2021). Ethical governance and women leadership in medieval India. *Journal of Indian Political Thought*, 8(1), 66–82.
13. Patil, V. (2020). Good governance and historical administrative systems in India. *Indian Journal of Public Administration*, 66(4), 510–524.
14. Sharma, R. (2018). Ahilyabai Holkar and public welfare governance. *History Research Review*, 10(3), 102–118.
15. Government of India. (2023). *Digital India Programme Report*. New Delhi: Ministry of Electronics and Information Technology.
16. NITI Aayog. (2022). *Good governance index report*. New Delhi: Government of India.
17. United Nations Development Programme. (2021). *Governance for sustainable development*. New York: UNDP.
18. World Bank. (2020). *Governance and development report*. Washington, DC: World Bank Publications.